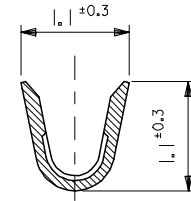
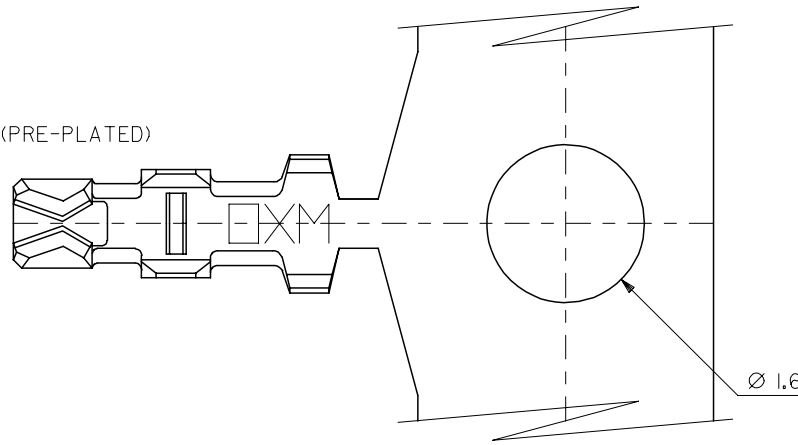


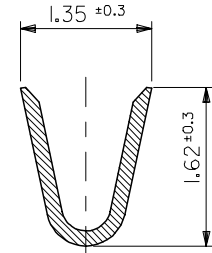
10 9 8 7 6 5 4 3 2 1

注記  
NOTES

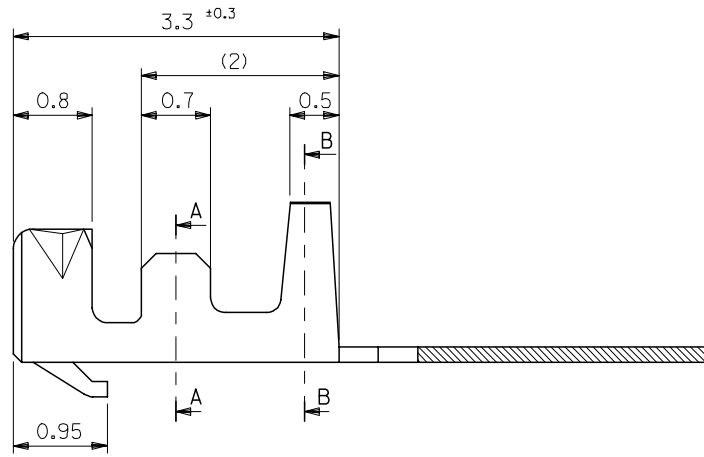
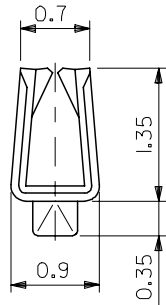
- 適合ハウジング：51021シリーズ  
APPLICABLE HOUSING : 51021 SERIES
- メッキ仕様 PLATING  
錫 0.9μm MIN. リフロー処理 (前メッキ)  
TIN 0.9μm MIN. REFLOW TREATMENT (PRE-PLATED)



SECT. A-A



SECT. B-B



50079-8100	バラ状 LOOSE
50079-8000	連鎖状 CHAIN
MATERIAL NO.	端子形状 FORM

MODEL NO. 50079-8\*00

材料 MATERIAL リン青銅 (t=0.15) PHOSPHOR BRONZE 仕上げ FINISH —#— 適用電線範囲 WIRE RANGE AWG #26-28 被覆外径 INS. RANGE φ0.5-1.04	REVISED EC NO: J2005-1535 DRAWN:SUZUKI 2004/11/30 CHKD:KTOJO 2004/11/30 APPR:NUKITA 2004/12/06 G	GENERAL TOLERANCES (UNLESS SPECIFIED)		DIMENSION STYLE MM ONLY	SCALE 20:1	DESIGN UNITS METRIC	THIRD ANGLE PROJECTION	
		10 UNDER	±0.2	DRAWN BY HHIRAMOT	DATE 92/10/21	TITLE 1.25 WIRE TO BOARD CONN. CRIMP REC. TERMINAL -LEAD FREE-		
		10 OVER 30 UNDER	±0.25	CHECKED BY SKUNISHI	DATE 98/07/07			
		30 OVER	±0.3	APPROVED BY MFUKUSHI	DATE 98/07/07	MATERIAL NO.	DOCUMENT NO. SD-50079-001	SHEET NO. 1 OF 1
ANGULAR ±3 °		DRAFT WHERE APPLICABLE MUST REMAIN WITHIN DIMENSIONS		SEE CHART		MOLEX INCORPORATED		
SIZE A3				THIS DRAWING CONTAINS INFORMATION THAT IS PROPRIETARY TO MOLEX INCORPORATED AND SHOULD NOT BE USED WITHOUT WRITTEN PERMISSION				

10 9 8 7 6 5 4 3 2 1

F

F

E

E

D

D

C

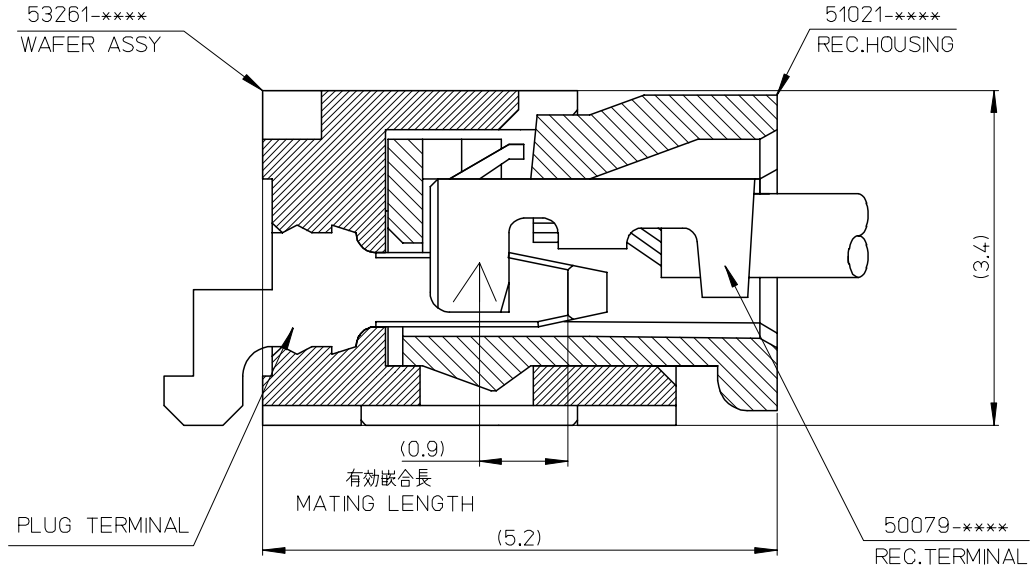
C

B

B

A

A



53261-****	WAFER ASSY	MODEL NO./MATERIAL NO.
50079-****	TERMINAL	
51021-****	HOUSING	

RELEASED EC NO: J2006-2426 DRWN: A0YAGI 2006/02/02 CHKD: YMAEDA 2006/02/03 APPR: NUKITA 2006/02/07	GENERAL TOLERANCES (UNLESS SPECIFIED)		DIMENSION STYLE MM ONLY		SCALE ---	DESIGN UNITS METRIC	THIRD ANGLE PROJECTION	
	10 UNDER	± ---	DRAWN BY Y. A0YAGI	DATE 2006/01/30	TITLE 1.25 W-TO-B CONN. 51021,53261 MATING CROSS SECTION			
	10 OVER 30 UNDER	± ---	CHECKED BY Y. MAEDA	DATE 2006/01/30	MOLEX INCORPORATED			
	30 OVER	± ---	APPROVED BY N. UKITA	DATE 2006/01/30	DOCUMENT NO. SD-51021-002			
	ANGULAR	± --- °	MATERIAL NO. SEE CHART		SHEET NO. 1 OF 1			
0	DRAFT WHERE APPLICABLE MUST REMAIN WITHIN DIMENSIONS		SIZE A3		THIS DRAWING CONTAINS INFORMATION THAT IS PROPRIETARY TO MOLEX INCORPORATED AND SHOULD NOT BE USED WITHOUT WRITTEN PERMISSION			

9

8

7

6

5

4

3

2